

Manager Stage

Manager Stage

ref. MMSAW

- > Application specific software to control unlimited number of EventIX for large image presentations
- > Comprehensive graphical user interface with preview
- > Fast learning curve
- > Live and programmed shows

Download at

www.analogway.com :

- Product spec sheets,
- Latest product upgrades.

Manager Stage for **Analog Way** is based on the show control software **Manager Stage** by **Medialon**. A specific plug in for **EventIX** allows the control of an unlimited number of image processors from a single PC.

MINIMUM REQUIREMENTS :

- Windows XP or 2000
- Ethernet port
- Hub or Switcher for the control of several EventIX
- 1 CD Rom Drive

Its graphical programming interface represents your projection area and allows easy preview and programming of layout and transition effects. Layout and transition effects are stored in presets which can be recalled live during your presentation, or synchronized on a timeline. Presets can even be edited live during preview, just before being sent on screen.

All **EventIX** effects are supported by **Manager Stage**, such as PIP, wipe, fading, titling, mixing and seamless switching.

Thanks to its graphical user interface, **Medialon Manager Stage** for **Analog Way** gives you a unique tool to program and run large screen presentations. Even small events benefit from amazing effects which can only be achieved with a powerful software tool.

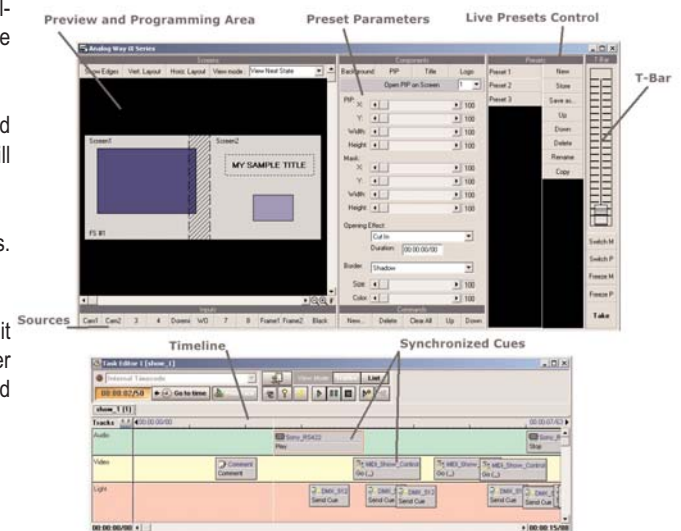
Programming: A preset is both a layout (ie. position of sources in window on your projection area) and an associated transition effect. Just drag and drop windows, assign sources and transition effect, run for pre-monitoring and store as a preset.

Live Show: All recorded presets are available randomly at a click of a mouse to be recalled and previewed on the computer screen. After recall, a preset can be edited just before being sent or sent directly by moving the T-Bar.

Pre-canned show: Presets can be recalled from a Timeline to be synchronized and sequenced accurately together. Even in this mode, live recall and edition of preset is still available.

Automatic start, loop, pause and many other features can be programmed in timelines. Several timelines can run simultaneously and saved for future use.

Updates: **Manager Stage** for **Analog Way** is a limited edition of **Medialon Manager Stage**, it controls the **IX**, **Octo** and **Graphic Switcher II** series from **Analog Way**. Control of other display devices (Matrix switchers, video-projectors, Video sources, etc...) can be added by using the **Medialon** enhancement kit available at www.medialon.com



REFERENCE

Medialon Manager Stage for AW: MMSAW

These specifications can be modified at any time without prior notice

www.analogway.com

P/N:MMSAW:A1005-VA

US and Canada
ANALOG WAY Inc
Tel.: 212 269 1902
Fax.: 212 269 1943
Email: salesusa@analogway.com

Europe, Africa, South America and Middle East
ANALOG WAY FRANCE
Tel.: 331 64 47 16 03
Fax.: 331 64 47 14 73
Email: saleseuro@analogway.com

Asia and Asia Pacific
ANALOG WAY Pte Ltd
Tel.: 65 62 92 58 00
Fax.: 65 62 92 52 05
Email: salesasia@analogway.com