

# SHOW MANAGER « OPEN EDITION »

## SOFTWARE TO MANAGE UP TO 16 DISPLAY DEVICES



SHOW MANAGER OE™ Ref: SWM-OE

- > Software to simultaneously manage, from a PC, up to 16 display devices with EventIX™
- > Compatible with the EventIX, CentriX, NatiX and the OCTO Range

### MINIMUM REQUIREMENTS:

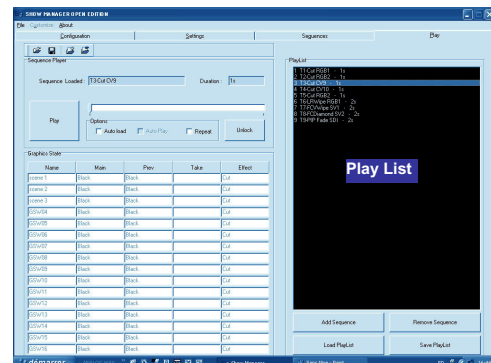
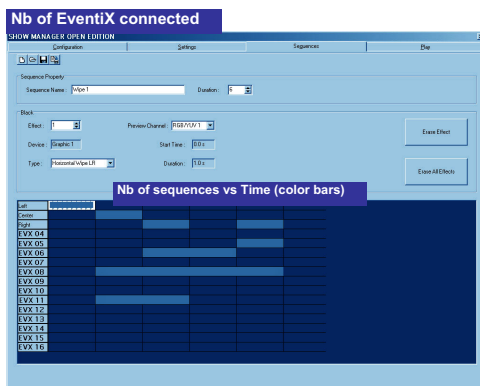
- 1 parallel port or USB
- 1 RS-232 serial port per EventIX connected. Contact us for PC RS232 extension
- 1 CD-Rom driver
- Windows, ME, XP 2000

### DESCRIPTION:

Show Manager Open Edition by Analog Way is specifically designed for large events that require the control of up to 16 display devices. This software can simultaneously manage up to 16 EventIX from a single PC.

Show Manager OE has the ability to program sequences visually and intuitively, to switch from one source to another with their associated transitions. This programming does not require any technical knowledge. Once the sequences are recorded, the video or computer images can be displayed as a time line on the large screen, using various effects such as PIP, wipes, fading, titling, mixing or seamless switching.

Fully automated, Show Manager OE is easy to use and offers amazing possibilities to make your events unforgettable.



### AUTOMATION PROCEDURE:

#### STEP 1

A sequence is a set of effects that can be recorded, automatically managed and displayed on the display device of your choice. Determine the number of effect patterns needed in the presentation, assign them to the proper display, and record the settings as "sequence" data.

#### STEP 2

All the sequences recorded can be included in the "play list" menu before execution (the order can be changed if necessary). The list of sequences can be saved for future events.

#### STEP 3

Sequences can be played in manual or automatic mode by clicking on the "play" button, and can be momentarily interrupted at any moment. Depending on your application, you may want to select several "play options" offered by Show Manager OE:

- "Repeat Button" to display the same sequence in a loop,
- "Auto Load" to start the next sequence at the end of the previous one,
- "Auto Play" to play all the sequences included in the play list.

