

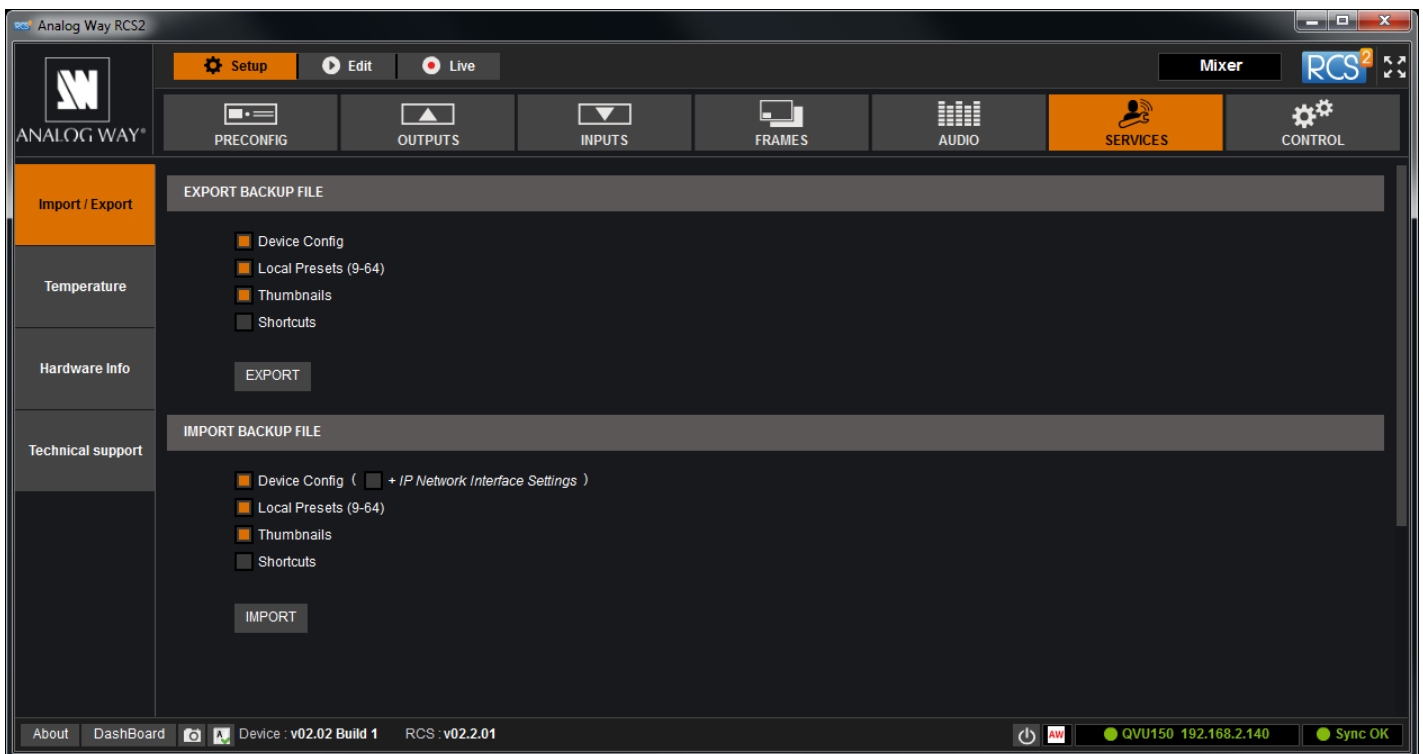
Products	Remote Control Software (RCS ²)
Date	July 12, 2018
Version	2.02.01

The version (s) indicated here above has (have) been tested and validated by the Technical Support Department.

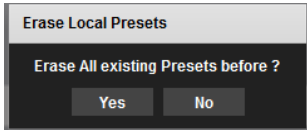
Technical Notes:

Evolutions:

- The RCS2 allows to import/export the whole configuration of a device in a zip file:
 - For backup purpose
 - For cloning purpose (only with a device with the same reference)



- To export a backup file, go to the Setup/SERVICES/Import-Export tab. In the EXPORT BACKUP FILE section:
 - Select what you want to export,
 - Press the Export button,
 - Select a folder and save the file → a zip file is created.

- To import a backup file, go to the Setup/SERVICES/Import-Export tab. In the IMPORT BACKUP FILE section:
 - Select what you want to import,
 - Press the Import button
 - Select and open the zip backup file
 - *If “Local presets” are selected, a popup window will open asking:*

 - *Choosing “Yes” will erase all the local presets and write those of the backup file*
 - *Choosing “No” will overwrite only the Locals Presets also contained in the backup file.*

- Please note that frames and logos are **not** included in the configuration file and must be captured again.

Bug Correction:

- None

PREVIOUS VERSIONS

Products	Remote Control Software (RCS ²)
Date	May 31, 2018
Version	2.01.07

The version (s) indicated here above has (have) been tested and validated by the Technical Support Department.

Technical Notes:

Evolutions:

- Update the address of Analog Way Asia HQ

Bug Correction:

- None

Products	Remote Control Software (RCS ²)
Date	March 8, 2018
Version	2.01.05

The version (s) indicated here above has (have) been tested and validated by the Technical Support Department.

Technical Notes:

Evolutions:

- Support of two new references:
 - QuickMatriX - H LE (ref. QMX150-H LE)
 - SmartMatriX² - H LE (ref. SMX250-H LE)
- Add HDBaseT Long Reach settings for inputs and outputs (already implemented in the front panel menu in previous firmware version)

Bug Correction:

- On the RCS², some audio inputs may be displayed in spite of the fact they don't exist

Products	Remote Control Software (RCS ²)
Date	October 11, 2017
Version	2.00.14

The version (s) indicated here above has (have) been tested and validated by the Technical Support Department.

Technical Notes:

Evolutions:

- Support of 4 new references:
 - QuickMatriX - H (ref. QMX150-H)
 - Pulse² - H (ref. PLS350-H)
 - SmartMatriX² - H (ref. SMX250-H)
 - Saphyr - H (ref. SPX450-H)
- New Flat Design

Products	Remote Control Software (RCS ²)
Date	December 21, 2016
Version	1.04.24

The version (s) indicated here above has (have) been tested and validated by the Technical Support Department.

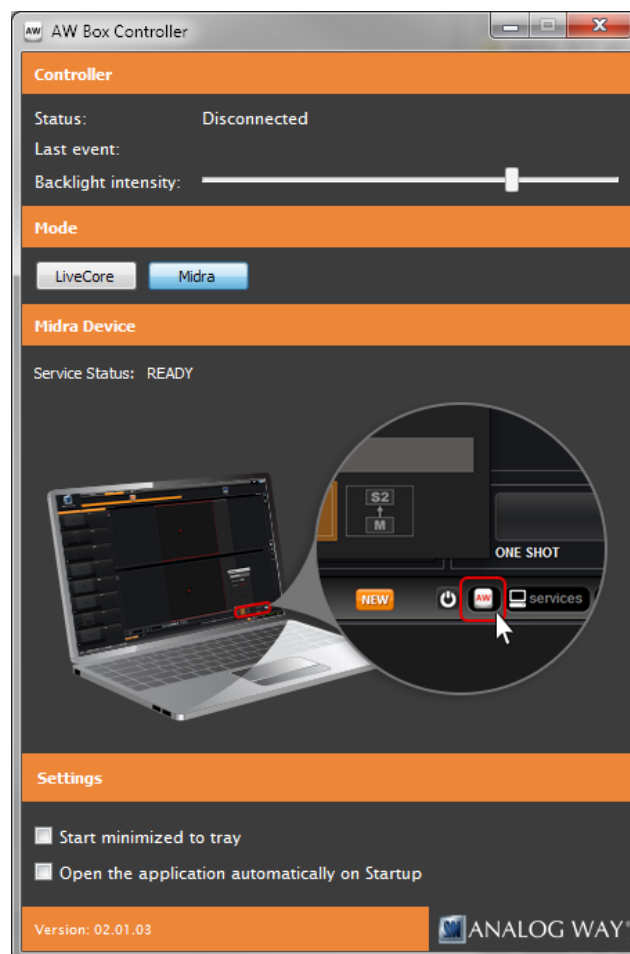
Technical Notes:

► Important:

- **Make sure you have uninstalled the old application before installing RCS² v1.04.24**

Evolutions:

- This new version is now compatible with the most recent runtime versions of Adobe AIR runtime and supports Windows and MAC OS up to Sierra v10.12.
- This version also supports the Shot Box (ref SB-80) and the Shot Box² (ref SB80-2) but you must install and execute the software AW Box Controller that now acts as a bridge between the shot box and the RCS2 application:



Products	Remote Control Software (RCS ²)
Date	November 23, 2016
Version	1.04.10 & 1.04.13

The version (s) indicated here above has (have) been tested and validated by the Technical Support Department.

Technical Notes:

► Important:

- **Make sure you have uninstalled the old application before installing RCS² v1.04.10 or v1.04.13** (configurations and presets are preserved)
- **Version 1.04.10 for Windows** includes SB-80 support and is compatible with any version of the Adobe AIR runtime.
- **Version 1.04.10 for MAC OS** includes SB-80 support, requires Adobe AIR runtime version 19 or earlier and is compatible with any MAC OS versions up to El Capitan (**MAC OS Sierra 10.12 is not supported**).
- **Version 1.04.13 for MAC OS** is compatible with any MAC OS version (Sierra 10.12 included) but does not include any support for SB-80 and **requires Adobe AIR runtime v23**.

Evolutions:

- New cooling management: Un-needed fans have been disabled and will only run for a one minute test every 4 hours, or if the chip temperature reaches an extreme temperature. A core set of fans will continue to cool the unit and fan speed will be throttled based on the ambient temperature. The results of the last fan test can be found on the **Services : Temperature** page.

Bugs fixes:

- RCS² installation software has a valid digital signature (no longer expired).

Products	Remote Control Software (RCS²)
Date	February 20, 2015
Version	1.04.01

The version (s) indicated here above has (have) been tested and validated by the Technical Support Department.

Technical Notes:

Bugs fixes:

- *After a "Default values" the background live layer is reset to full screen*
- *Grey scale and gradient pattern have bad pictogram*