

INTRODUCTION

AW VideoCompositor for Midra™ 4K

V1.2.0

Developed by



ANALOG WAY®
Pioneer in Analog, Leader in Digital

Description

AW VideoCompositor for Midra™ 4K allows developers to control with minimal programming the advanced features of any Midra™ 4K presentation system and build innovative control solutions using a single Crestron® touchscreen.

AW VideoCompositor for Midra™ 4K provides outstanding functionalities including visualization in real time of the screens with layer positions, display of sources snapshots refreshed automatically, layer source management through drag and drop, capability to change position and size of a layer with the flick of a finger, multiviewer mosaic configuration, advanced audio routing, etc.

Package content

The package contains the following components:

- The Smart Graphics™ module (named AW Multi Display Composer). It can be installed easily via the Windows setup application provided: *AW_SmartGraphicsPackage_5.0.0_setup.exe*
- The modular Crestron driver for the Midra™ 4K series (for the 3-series Crestron processor)
- The modular Crestron driver for the Midra™ 4K series (for the 4-series Crestron processor)
- A SIMPL+® example program that demonstrates the features supported by the driver (two programs available, one for the 3-series and one for the 4-series processors)
- A XPanel project running with the SIMPL+® sample program provided
- Help files in English

Key features

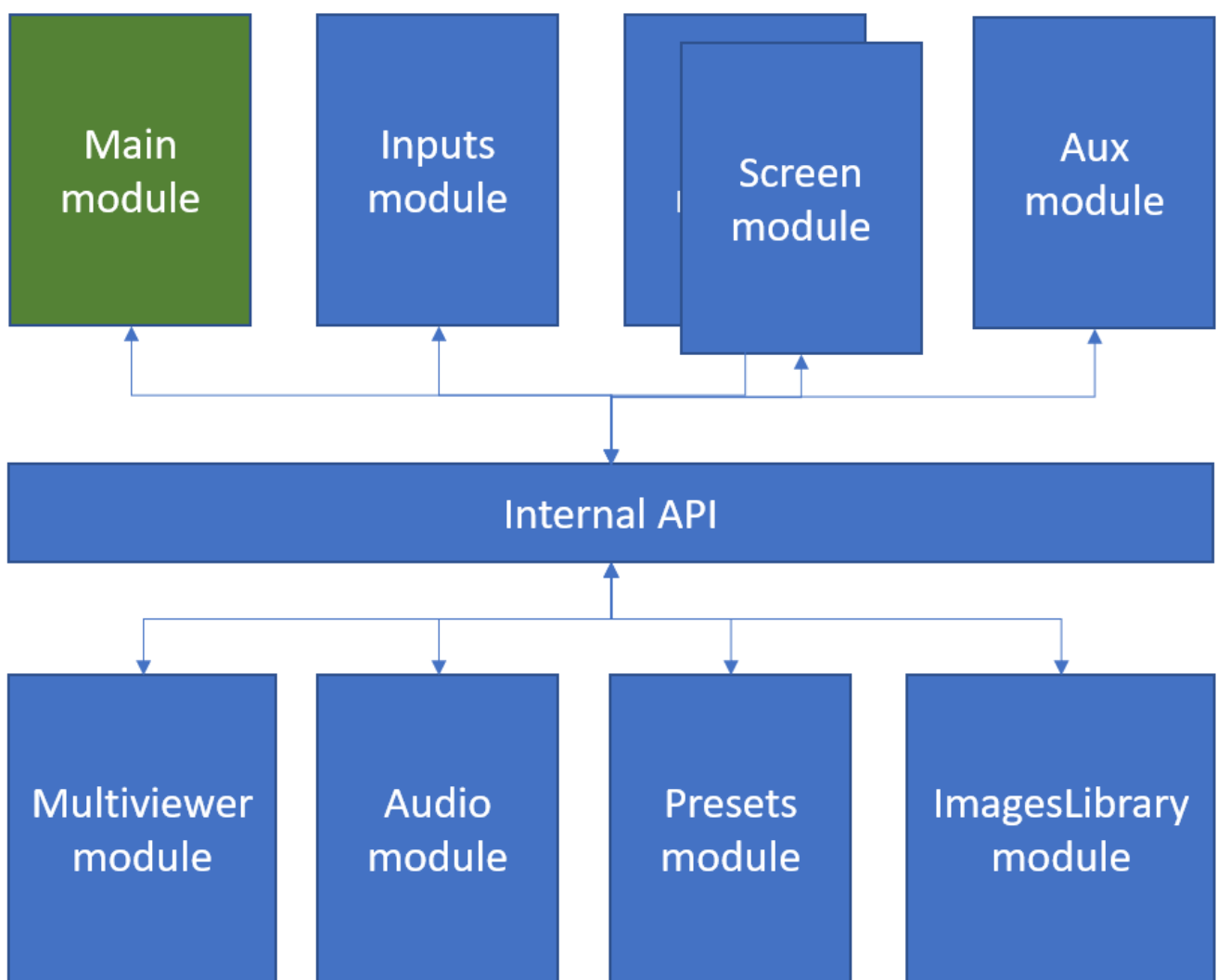
- Visualize your screens with layers size and position (PRG or PRW)
- Visualize your auxiliary output and easily select the source to display
- Use the touchscreen to resize or adjust layer position
- Visualize live sources with their dynamic thumbnail
- 2 modes for source selection: Drag & Drop or Select & Click
- Recall screen/aux memories or master memories and start transitions (Take)
- Change screen background instantly
- Configure multiviewer mosaic with a simple flick of the finger
- Route de-embedded audio channels or Dante input audio channels to your video outputs or Dante output audio channels
- The Video Compositing Smart Graphics™ module can be customized to match the look and feel of your application
- The Video Compositing Smart Graphics™ module can be configured to match your exact screens configuration (canvas size, layers, ...)

Requirements

- Any Analog Way Midra™ 4K live presentation switcher (Eikos 4K, Pulse 4K, QuickMatrix 4K and QuickVu 4K) or the Midra™ 4K Simulator
- A 3-series or 4-series Crestron processor with Ethernet connection
- Any Crestron XPanel compliant display

Driver Modularity

The driver provides several functional modules (**Main** module is required; the others are optional) that can be combined according to your needs. You can load the example provided to see how they are structured/built.

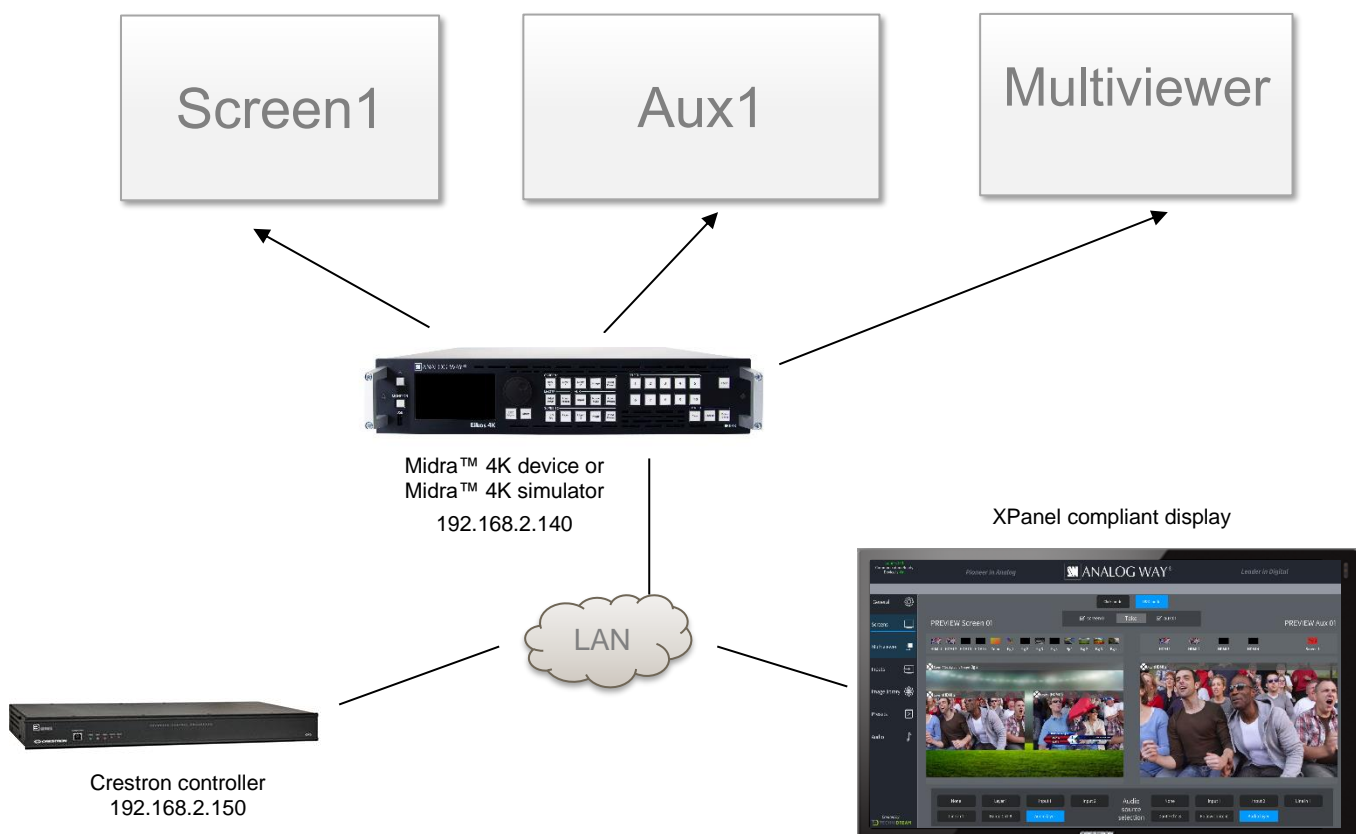


Recommended software versions

Software	Versions
Midra™ 4K firmware	1.2.7 or above
Midra™ 4K Simulator	1.0.7 or above
SIMPL Windows	4.14.31 or above
VPro-e	6.2.02.08 or above
Smart Graphics™	2.17.01.01 or above
Device database	200.50.001.00 or above
Crestron database	203.05.001.00 or above
Simpl+ cross compiler	1.3 or above

Configuration and settings to run the example

The example provided within the package has been designed to control a Midra™ 4K live presentation switcher configured as “Mixer”, i.e. one Screen, one Auxiliary output and one Multiviewer. Before running this sample, please make sure your configuration (as well as the IP addresses) matches the diagram below:



The example also can use up to 10 Screen memories, AUX memories, Master memories and Multiviewer memories that should be created with the Web RCS before running it.

- Screen 1 contains 1 background layer + 2 layers for live inputs + 1 still image foreground layer
- AUX 1 can be used to display screen 1 program or any of the 10 inputs (scaled)

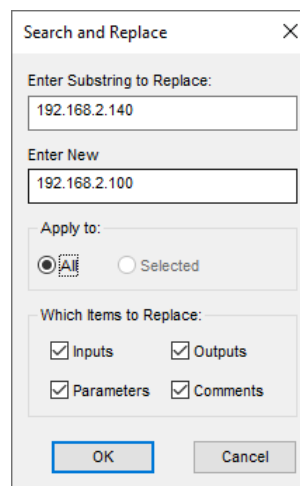
- Multiviewer is used to preview sources or screen 1 (PGM and PRW). 10 widgets can be controlled by the demo application

Of course, you can reuse this example as much as necessary to implement your own solution.

Customize the IP address of the Midra™ 4K device

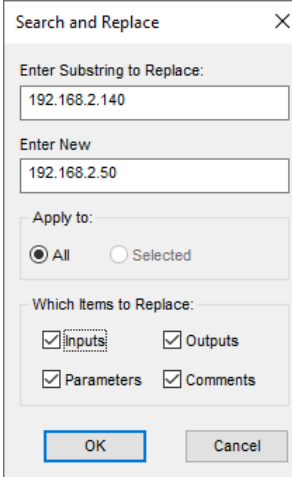
Before running the demo program to control your own Midra™ 4K live presentation switcher or your Midra™ 4K Simulator, it is important to customize some settings regarding the Midra™ 4K device that will be controlled:

- Open the Midra™ 4K SIMPL demo program (*Midra4K_Crestron_VC_Demo.smw*). There are two versions of the demo program available, one for the 3-series and one for the 4-series Crestron processors. Select the one that matches the type of controller you intend to use.
- If the program will control a real Midra™ 4K device, then select the *S-1: Init* folder and press F9 to replace the default IP address (192.168.2.140) with your Midra™ 4K device IP address (ex. 192.168.2.100):



Then go to end of the first module *S-1.1 : Multiple Serial Send* and modify the default Midra™ 4K MAC address with the one from your Midra 4K device (for ex. 80:1F:12:40:59:CE).

- On the contrary, if you plan to control the Midra™ 4K Simulator instead of a real Midra™ 4K device, then select the *S-1: Init* folder and press F9 to replace the default IP address (192.168.2.140) with the IP address of the computer running the Midra 4K Simulator (for ex. 192.168.2.50):



Search and Replace

Enter Substring to Replace:
192.168.2.140

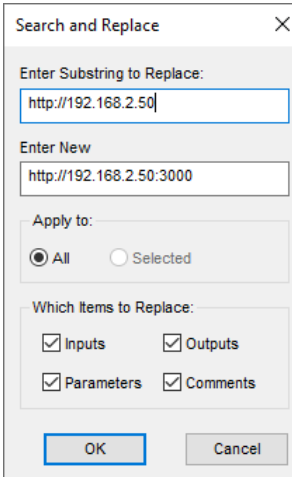
Enter New
192.168.2.50

Apply to:
 All Selected

Which Items to Replace:
 Inputs Outputs
 Parameters Comments

OK Cancel

Press F9 again to replace the default Midra™ 4K device access URL (<http://192.168.2.140>) by the Midra™ 4K Simulator access URL available on TCP port 3000 (for example <http://192.168.2.50:3000>):



Search and Replace

Enter Substring to Replace:
http://192.168.2.50

Enter New
http://192.168.2.50:3000

Apply to:
 All Selected

Which Items to Replace:
 Inputs Outputs
 Parameters Comments

OK Cancel

Then go to end of the first module *S-1.1 : Multiple Serial Send* and modify the default Midra™ 4K MAC address by the one from the Midra 4K Simulator (always 11-22-33-44-55-66).

- If the Web RCS has been configured to reached only via the HTTPS secured protocol, you will need to replace all the HTTP URL to HTTPS URL.
- Recompile and upload the program on a Crestron controller.

Do not forget to update the connection parameters when launching the demo Xpanel to access your Crestron controller. By default, the Xpanel application will try to connect on 192.168.2.150.

License

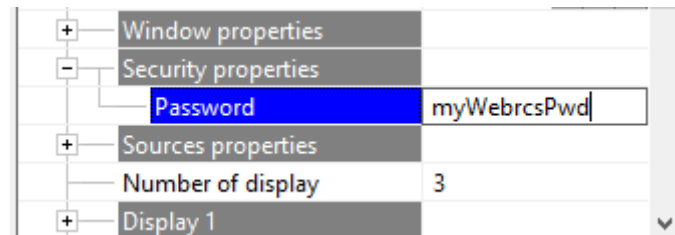
Before using **AW VideoCompositor for Midra™ 4K** you need to purchase a license. For pricing information, please contact your Analog Way sales representative or reseller. The license key can be entered on the

main page of the XPanel example main page (but will be lost after a reboot of the controller) or preferably directly in the Crestron driver (parameter of the Midra_Main_VC module).

If you are only using the Midra™ 4K Simulator to test your program, then you can use the license **EA0F-07DD-70CA-7DDE-A9F3**.

Authentication

When authentication is enabled in WebRCS, it is necessary to add the new password in each **AW VideoCompositor** in the VTPro-e project, so as to be able to retrieve snapshots and images.



November 2021 - v1.2.0

Connect with us on

