

Products	VIO 4K
Date	March 30th, 2020
Version	2.10.82
Web Remote Control Software (Web RCS)	2.10.01

The version (s) indicated here above has (have) been tested and validated by the Technical Support Department.

Technical Notes:

Evolution:

- Add new Screen Test Patterns
- Support for hardware revision.

Bug fixes:

- Multiple corrections on format constraints and supports for standard chassis and optional cards (OPT-4K60P-VIO 4K, OPT-4K60P-SDI-VIO4K and OPT-OUT-VIO4K).
- Display issue when rotation (90° and 270° only) is used with 100Hz/120Hz Input/Output formats.
- Audio:
 - An audio output can be altered when a DisplayPort audio input is selected (Input 1 or DisplayPort input of an optional card (OPT-4K60P-VIO 4K, OPT-4K60P-SDI-VIO4K).
 - The delay between audio on prelist and the visual audio bar graph can reach 1 second.
 - After a device update, the audio DANTE board indicates an error. An additional reboot is necessary.
 - Audio equalization doesn't work when output sampling is set to 96kHz.
- Test Patterns:
 - the first diagonal of screen geometric pattern may be not drawn.
 - A black line may appear at the screen center when the Motion feature is enabled on a burst pattern
- For LAN Configuration, any non-validated configuration change will be lost when entering "Reset to default setup", even if finally discarding the reset.

Missing features:

- 6G-SDI support for inputs (SDI and Optical)

PREVIOUS VERSIONS

Products	VIO 4K
Date	February 19th, 2019
Version	2.01.55
Web Remote Control Software (Web RCS)	2.01.20

The version (s) indicated here above has (have) been tested and validated by the Technical Support Department.

.....

Technical Notes:

Evolution:

- For factory only: support of new eMMC memory reference.

Bug fixes:

- None

Missing features:

- 6G-SDI support for inputs (SDI and Optical)

Products	VIO 4K
Date	March 21 st , 2018
Version	2.01.54
Web Remote Control Software (Web RCS)	2.01.20

The version (s) indicated here above has (have) been tested and validated by the Technical Support Department.

.....

Technical Notes:

Evolution:

- None

Bug fixes:

- For optional card OPT-4K60P-SDI-VIO4K, the SDI inputs and outputs may be lost and require a reboot.

Missing features:

- 6G-SDI support for inputs (SDI and Optical)

Products	VIO 4K
Date	January 18 th , 2018
Version	2.01.52
Web Remote Control Software (Web RCS)	2.01.20

The version (s) indicated here above has (have) been tested and validated by the Technical Support Department.

Technical Notes:

Evolution:

- None

Bug fixes:

- In the Web RCS, when the screen size mode is Auto, the position changes of the outputs are applied properly if the new position is outside the screen.
- For the **OPT-4K60P-SDI-VIO4K optional card**, when configuring the SDI output plugs with a four-quadrant format or a 2-SI format (2-Sample Interleave division method, SMPTE ST425-5), the payloads are not correct.

Missing features:

- 6G-SDI support for inputs (SDI and Optical)

Products	VIO 4K
Date	September 4 th , 2017
Version	2.01.48
Web Remote Control Software (Web RCS)	2.01.10

The version (s) indicated here above has (have) been tested and validated by the Technical Support Department.

Technical Notes:

Evolution:

- None

Bug fixes:

- The device update may stall at 33%

Missing features:

- 6G-SDI support for inputs (SDI and Optical)

Products	VIO 4K
Date	July 24, 2017
Version	2.01.46
Web Remote Control Software (Web RCS)	2.01.10

The version (s) indicated here above has (have) been tested and validated by the Technical Support Department.

Technical Notes:

Evolution:

- Support of OPT-4K60P-SDI-VIO4K
- Support of forthcoming OPT-OUT-VIO4K
- Add a user setting to downgrade the DisplayPort input plugs of OPT-4K60P-SDI-VIO4K and OPT-4K60P-VIO4K from 1.2 standard to 1.1 standard in order to be compatible with older DisplayPort sources

Bug fixes:

- Fix audio problems with 6G-SDI and 12G-SDI Blackmagic Design sources
- EDID with a preferred format whose Vertical Synchro or Vertical Front Port is greater than 15 are not decoded properly.

Missing features:

- 6G-SDI support for inputs (SDI and Optical)

Products	VIO 4K
Date	July 10, 2017
Version	2.00.91
Web Remote Control Software (Web RCS)	2.00.65

The version (s) indicated here above has (have) been tested and validated by the Technical Support Department.

Technical Notes:

Evolution:

- Add an enable parameter to the output color temperature setting so that the correction changes are performed without artifacts

Bug fixes:

- Changes of all output color settings (excepted for Gamma correction) are now applied and synchronized to the output frame rate to prevent from artifacts.
- Alpha content is not forced to black when the quick frame or the preset frame are not scaled
- Outputs with rotation may lose their live layer after rebooting
- Output Pitch parameters are not used for AOI size calculation

Missing features:

- 6G-SDI support for inputs (SDI and Optical)

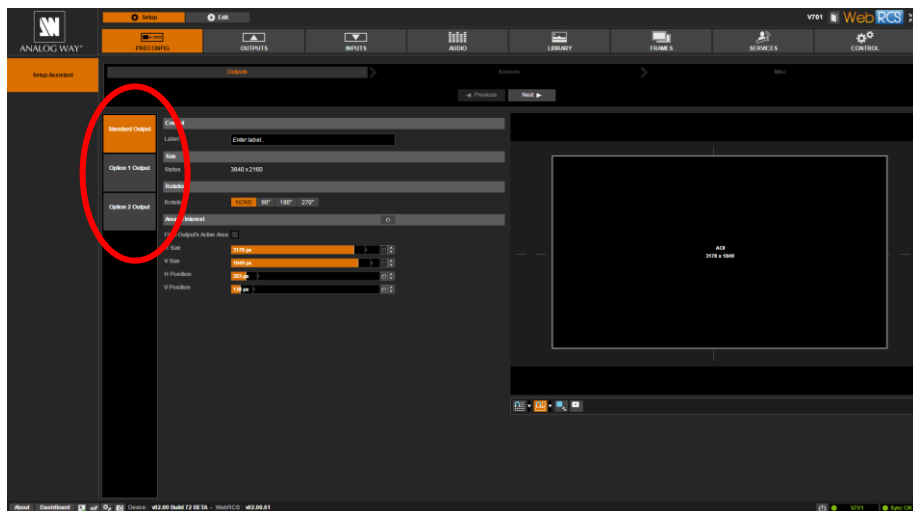
Products	VIO 4K
Date	May 30, 2017
Version	2.00.76
Web Remote Control Software (Web RCS)	2.00.62

The version (s) indicated here above has (have) been tested and validated by the Technical Support Department.

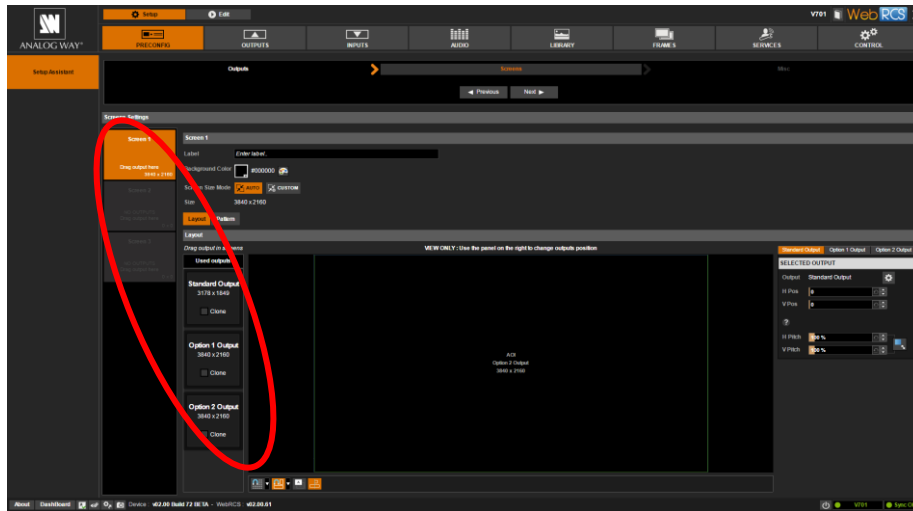
Technical Notes:

New features:

- Multi-Outputs support:
 - This version supports the optional video board OPT-4K60P-VIO4K. This board can stand input and output formats up to 4K 60Hz 4:4:4
 - Each time an optional board is installed, a new output is available: up to two boards can be installed, so up to two additional outputs can be added. The Area of Interest (AOI) and the rotation of each output are totally independent from those set for the other outputs.

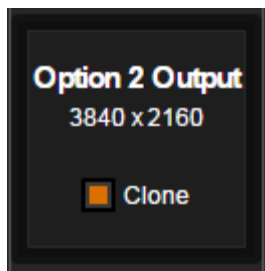


- Each time an optional board is installed, a new screen is available. If two optional boards are installed then three screens and three output resources are available.

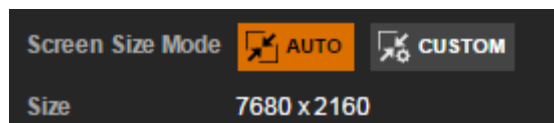


Each screen is enabled as soon as it has at least an output resource assigned. Output assignment is achieved dragging and dropping outputs from one screen to another one. All the output resources can be assigned to the same screen, disabling all the other screens.

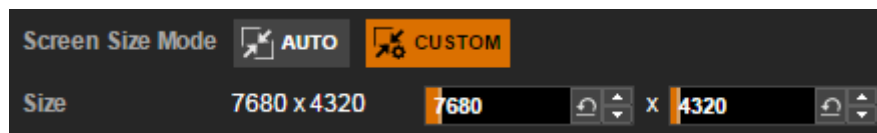
Once assigned to a screen, any output can be configured as Clone, meaning that it will display the entire screen scaled to the output resolution. Including the



- The screen size can be determined according to modes:
 - **Auto:** the screen is automatically computed according to the max area required to display all the AOI (please note that the horizontal and vertical positions of the AOI are used for screen size computation)

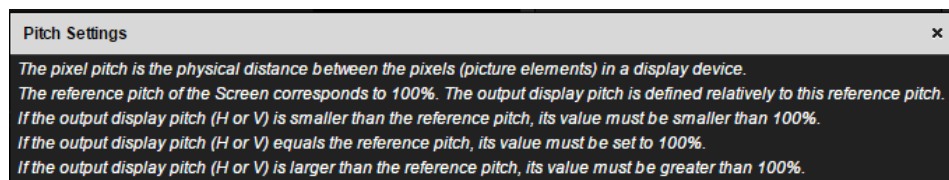
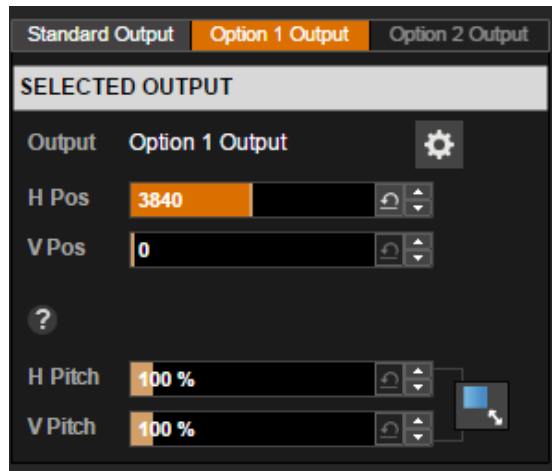


- **Custom:** the operator manually sets the size of the screens in pixels.



- In both modes, the AOI of an output can be moved everywhere inside the screen but can't go outside the screen. The position can be adjusted using the horizontal and vertical position settings (in pixels) of the AOI

For LED wall applications mixing several tile pitches inside the same screen, a pitch compensation system is available for each output. This system is based on a reference screen pitch equals to 100%. The differing pitches are percentages of this reference pitch.



- A screen pattern is available to help the positioning of several outputs in the screen. This pattern contains various settings such as crosshatch lines, circles, tiles border and IDs among others.
- When equipped the HDMI 2.0 and DP1.2 optional video board, the VIO 4K may deliver or receive UHDTV formats using the YCbCr ITU-R BT.2020 color space instead of the YCbCr ITU-R BT.709 color space used for HDTV formats. So the operator must choose the internal processing color standard to optimize the color space gamut and limit useless color space conversions.
- Add the VESA 3840x2160 60Hz Reduced Blanking output format to enable 10 bit support on the DisplayPort output plug of the optional video board OPT-4K60P-VIO4K.

Bug fixes:

- The Monitoring Stream Status in the main window of the Web RCS follows the Front Panel Monitoring Status, instead of the Web RCS stream status
- The embedded audio in the SDI/OPTICAL output may not be recognized by some displays or converters
- The content of 3440x1440 60Hz output format is not correct
- The 3G-SDI Level (A or B) selection menu of the SDI output is now only displayed if the output signal is really using 3G-SDI standard
- Disable and hide the Underscan/Overscan parameters for Analog Input# 3 if a computer format is detected.
- Serial port can't be enabled if the TPP functionality is disabled.
- Input #3 is disabled from monitoring selection when Input #6 is in Dual-Link mode
- Importing a format from the EDID database in custom format menu did not work
- Warnings and Errors from the DANTE audio board are not displayed on the Web RCS

- Access to EDID and HDCP settings are disabled when an HDBaseT extender is connected to the HDMI plug of the standard output.
- Color error could happen on specific high frequency transitions while a zoom factor is applied to the input content
- The range of the Input signal cropping parameters is not correct on the front panel menu

Missing features:

- 6G-SDI support for inputs (SDI and Optical)

Products	VIO 4K
Date	April 6, 2017
Version	1.40.14
Web Remote Control Software (Web RCS)	1.40.14

The version (s) indicated here above has (have) been tested and validated by the Technical Support Department.

.....

Technical Notes:

Bug fixes:

- HDCP isn't working on the DisplayPort output plug of the standard output

Missing features:

- 6G-SDI support for inputs (SDI and Optical)

Products	VIO 4K
Date	April 4, 2017
Version	1.40.13
Web Remote Control Software (Web RCS)	1.40.13

The version (s) indicated here above has (have) been tested and validated by the Technical Support Department.

Technical Notes:

New features:

- Added 6G-SDI standard support on the SDI/OPTICAL outputs
- Added the possibility to load a custom format from the EDID preferred format
- Added the Custom Format list to the input signal scan: now if a nonstandard signal is detected on an input and is also existing in the Custom Format library, the input signal scan process will recognize it and name it properly using its name in the library
- Added the support for ITU-R BT.2020
- Added a TPP interface for 3rd party control of the VIO 4K
- Added the support for the forthcoming optional DANTE audio board

Evolution:

- Added the possibility to disable LCD standby feature

Bug fixes:

- When a HDMI signal is detected, its aspect ratio should be the one indicated in the embedded HDMI infoframes
- The automatic signal type detection for HD15 analog input only works for Computer HV input signals
- When the output rate is generated using the framelock or genlock mode and the format is HDTV1080p60, there is a problem of Vertical and Horizontal offsets for the 3G-SDI output. Some values are ineffective
- The Monitoring Stream Status in the Web RCS may indicate the status of the front panel monitoring stream
- Framelocking a 1080p30 SDI input with the mode x2 doesn't not work
- Exporting an empty Frame Library in a device configuration package doesn't work. The empty Frame Library can't be imported later to overwrite the current library
- Audio isn't working on the DisplayPort output plug of the standard output
- Importing a frame in the library successively from the WebRCS and the front panel fails. The front panel may be dead-locked under certain conditions
- The audio channels from the optional audio board may be selectable even if no optional audio card is installed
- For dual-link signal, the status is erroneous: Image size and format size are different
- The 1280x960@85Hz output format doesn't not work
- SMPTE 720p 23.97/24/25/30 Hz formats are not detected on the standard HDMI and DVI inputs
- Some audio content can be clipped when listened with the prelist output (headphone)
- When the front panel monitoring is running and the front panel has been locked from the WebRCS, any physical interaction with the front panel displays a message that disables the monitoring

- Some pixels may be forced to black at the end of lines on the HD15 output plug
- Analog format detection often selects an incorrect format when several choices are possible
- Using HDMI output plug as a loop through output for an input without signal may cause the loss of the HDMI output plug
- 480i format content was incorrect on DisplayPort output
- Interlaced formats were not deinterlaced properly on DisplayPort input

Missing features:

- 6G-SDI support for inputs (SDI and Optical)

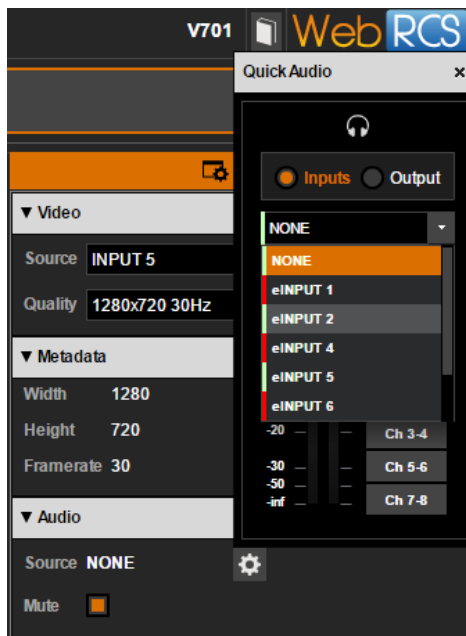
Products	VIO 4K
Date	October 19, 2016
Version	1.20.19
Web Remote Control Software (Web RCS)	1.20.12

The version (s) indicated here above has (have) been tested and validated by the Technical Support Department.

Technical Notes:

New features:

- Added the ability to listen to audio prelist via the WebRCS monitoring:



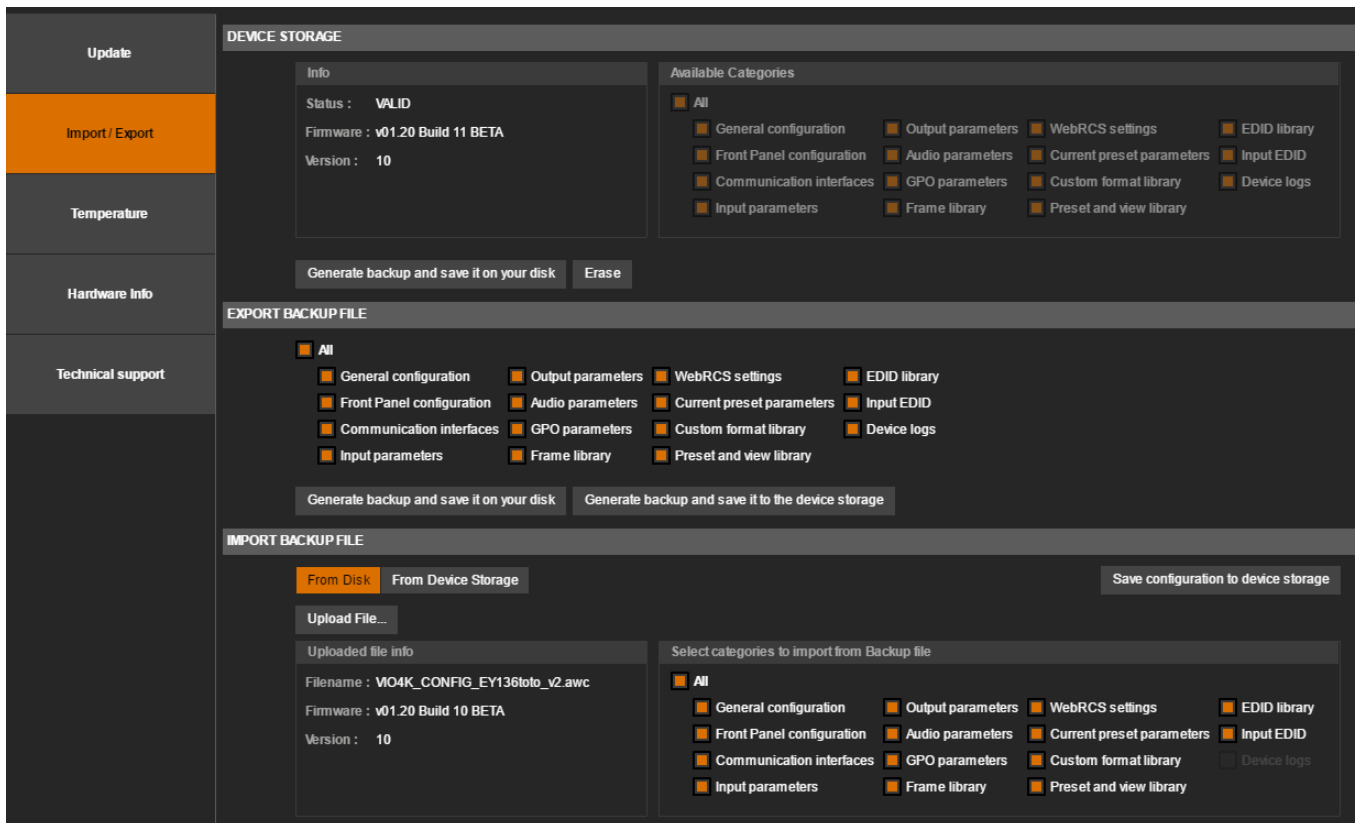
- Added the ability to import/export the partial or full configuration of the device. This can be performed from/to the device internal storage (only one backup file), a USB key or your computer disk.

Note: Current device configuration will persist through reboot, exporting the configuration is only necessary for archival purposes.

Exporting or importing a device configuration can be achieved either directly from the front panel menu or from the WebRCS.

To export the device configuration from the WebRCS:

- Go to the **Setup** menu then click on the **SERVICES** tab.
- On the left side toolbar, select **Import / Export**:



3. Select the categories you want to export (all by default).
4. If you want to export and save the current configuration to the device internal storage then click the **Generate backup and save it to the device storage** button. If you want to export and save the current configuration to your own disk, simply click the **Generate backup and save it on your disk** button.

To import a configuration backup into the device from the WebRCS:

1. Go to the **Setup** menu then click on the **SERVICES** tab.
 2. On the left side toolbar, select **Import / Export**.
 3. If you want to restore the configuration backup stored in the device internal storage, click the **From Device Storage** button located in the **IMPORT BACKUP FILE** section then click the **Extract from Device Storage** button. When the configuration details appear (version, categories available ...), select the categories you want to restore (all by default) then click the **Load to Device** button.
 4. If you want to restore the configuration backup from your computer disk, click the **From Disk** button located in the **IMPORT BACKUP FILE** section then click the **Upload File...** button. Click the [...] button and locate the configuration backup file. When ready click the **Upload File** button. When the configuration details appear, select the categories you want to restore (all by default) then click the **Load to Device** button.
- Added video loop-through for DVI, HDMI, HD15 inputs (to connect an additional device or for local monitoring).

To enable the loop mode from the WebRCS:

1. Go to the **Setup** menu then click on the **OUTPUTS** tab to access the outputs setup page.
2. On the left side toolbar, select **STANDARD OUTPUT** to access the standard output setup page then click the **Show plugs settings** button.

3. Locate the output plug to set up (only HDMI, HD15 and DVI output plugs support this feature).
4. Check the **Loop Mode** box:
 - **HD15**: the INPUT 3 (HD15) video signal is automatically passed to the output HD15 plug.
 - **HDMI** or **DVI**: select either **INPUT 2 (HDMI)** or **INPUT 6 (DVI)**. The selected input signal is then automatically passed to the selected HDMI or DVI output plug. The loop feature of each plug is independent.

When loop mode is enabled, the corresponding output plug is no longer available as a standard scaled output, but as a unscaled loop of the selected input.

HDMI and DVI loop share the same hardware resources. This means each of the HDMI and DVI output plugs can display the looped input of either the HDMI input or the DVI input signal.

As an example:

- The HDMI output connector can be configured to display the unscaled input signal from the HDMI input 2 or the DVI input 6. The DVI output plug can still display the scaled output.
- The DVI output connector can be configured to display the unscaled input signal from the HDMI input 2 or the DVI input 6. The HDMI output plug can still display the scaled output.

Important: When the loop mode is enabled for HDMI or DVI, only the video signal is passed to the output plug (audio is not supported).

Note: SDI loop-though is active at all times and does not require additional configuration.

Evolution:

- Scaling is now based on Analog Way's new exclusive high-quality technology, ensuring crisp and natural images whatever the source and the scaling level are, while maintaining ultra-low processing latency. 3 sharpness levels are available to optimize the scaling results according to your source: Low, Medium (default) and High
- Added new 1080x1920 and 1200x1920 resolutions to input EDID preferred formats
- A warning is displayed on the GUI when the source used as reference in Framelock/Genlock seems to be unstable
- A message is displayed on the Web RCS monitoring page when a HDCP conflict prevents from displaying a HDCP content

Bug fixes:

- The comma character (,) cannot be part of a frame file pathname
- It is impossible to enable HDCP encryption on some displays connected to the DisplayPort output plug (OK with HDMI)
- If a display connected to the HDMI output plug is switched off, the corresponding EDID can't be read
- If the embedded audio rate on SDI/OPTICAL inputs is different from 48 kHz, the audio content is not properly sampled
- The horizontal size of the first column of a checker board pattern is not correct
- While monitoring an input on the WebRCS (MON. STREAM tab), if user unplugs this input then changes the current quality level then plugs the same input again, the monitoring stream isn't displayed anymore

- 480i input format is not displayed properly on the monitoring stream (front panel only)
- The monitoring stream is not correctly centered on the WebRCS when cropping adjustments are applied on a high resolution stream (more than 165Mpixels/s and/or line size > 2048 pixels)
- Global resets are not applied on the selected screen layer
- SDI Group Status are not updated in the audio page when connecting/disconnecting SDI input
- Reset AOI H Size and V Size are not applied when H or V position are different from 0
- Pan H/V are not correctly set in pixel mode
- If some changes (capture/import) are applied to a frame being displayed, the frame is not properly updated
- 1080p format is detected as 2K on the HD15 input
- After 24 hours, when the front panel LCD enters standby mode, it goes back to standby mode immediately after a coder move and not 5 minutes later as it should
- On the HD15 input, the sync polarities of the detected signal are inverted
- Some parameters may not be saved properly after a factory reset - a reboot is required
- Some characters can't be used (shortcut) in input label
- Output capture may hang if any input transition is triggered while the corresponding output is frozen
- Mask Top/Bottom/Left/Right are not correctly set (pixel mode)
- Mask values in view settings are not updated when zoom changes (pixel mode)
- A frame can't be removed when used as quick frame and/or as a preset frame

Known issues:

- Auto type for the HD15 input works for Computer HV input signals only
- In the front panel menu, if some changes are being made to the current network configuration (SETUP LAN page), selecting then discarding the option 'Reset to Default Setup' will automatically restore the previous values for all items
- The Stream Status in the main window follows the general monitoring status and not the WebRCS stream
- Framelock on the SDI input with the "x2" mode does not work correctly
- Custom formats whose line width is not a multiple of 4 and pixel clock is greater than 165 MHz (or a pixel line larger than 2048 pixels) are not correctly generated
- Importing a device configuration with an empty frame library will not erase the existing device frame library even if the frame library policy is set to "replace". Please make sure to manually erase the library content in this specific case.

Missing features:

- 6G-SDI support for inputs and outputs (SDI and Optical)

Products	VIO 4K
Date	July 4 th , 2016
Version	1.10.44
Web Remote Control Software (Web RCS)	1.10.08

The version (s) indicated here above has (have) been tested and validated by the Technical Support Department.

Technical Notes:

New features:

- None

Evolution:

- Changing the default colorimetry to RGB 0-255 instead of RGB 16-235 for the following outputs:
 - DVI output
 - HDMI output when used in DVI mode

Bug fixes:

- Noise may appear on the audio of SDI inputs
- For input #7, the menu item “Recall view” in page “Pan Zoom” doesn’t work.
- In page “CUSTOMIZE/HDCP Manager”, disabling the HDCP support for all the inputs doesn’t work.
- It is not possible to use an updater file whose size exceeds 100MB.

Known issues:

- Web RCS Monitoring:
 - Changing the monitoring format after unplugging the current monitored input may cause an erroneous display once the input is plugged again.
 - The monitored content can’t be centered when a crop is applied to a high resolution stream (more than 165Mpixels/s)
 - Depending on the monitoring format, a 480i signal may not be displayed properly.

Missing features

- Import/export of the device configuration
- 6G-SDI support for inputs and outputs (SDI and Optical)

Products	VIO 4K
Date	June 14 th , 2016
Version	1.00.40
Web Remote Control Software (Web RCS)	1.10.08

The version (s) indicated here above has (have) been tested and validated by the Technical Support Department.

Technical Notes:

New features:

- None

Bug fixes:

- Changing the stream monitored in the Web RCS may cause a failure of the Frame/Snapshot/Monitoring functionalities
- Input cropping modifications are not applied immediately when capturing an input. Once the unit has rebooted, the new input cropping are used during the capture.
- When looking at the Screen 1 status in the SUMMARY menu, the status of the slot 1 in the frame library is duplicated several times with a wrong display size (0x0).
- The unit may become unusable if the size of the AOI is too close to 0.

Known issues:

- Web RCS Monitoring:
 - Changing the monitoring format after unplugging the current monitored input may cause an erroneous display once the input is plugged again.
 - The monitored content can't be centered when a crop is applied to a high resolution stream (more than 165Mpixels/s)
 - Depending on the monitoring format, a 480i signal may not be displayed properly.

Missing features

- Import/export of the device configuration
- 6G-SDI support for inputs and outputs (SDI and Optical)

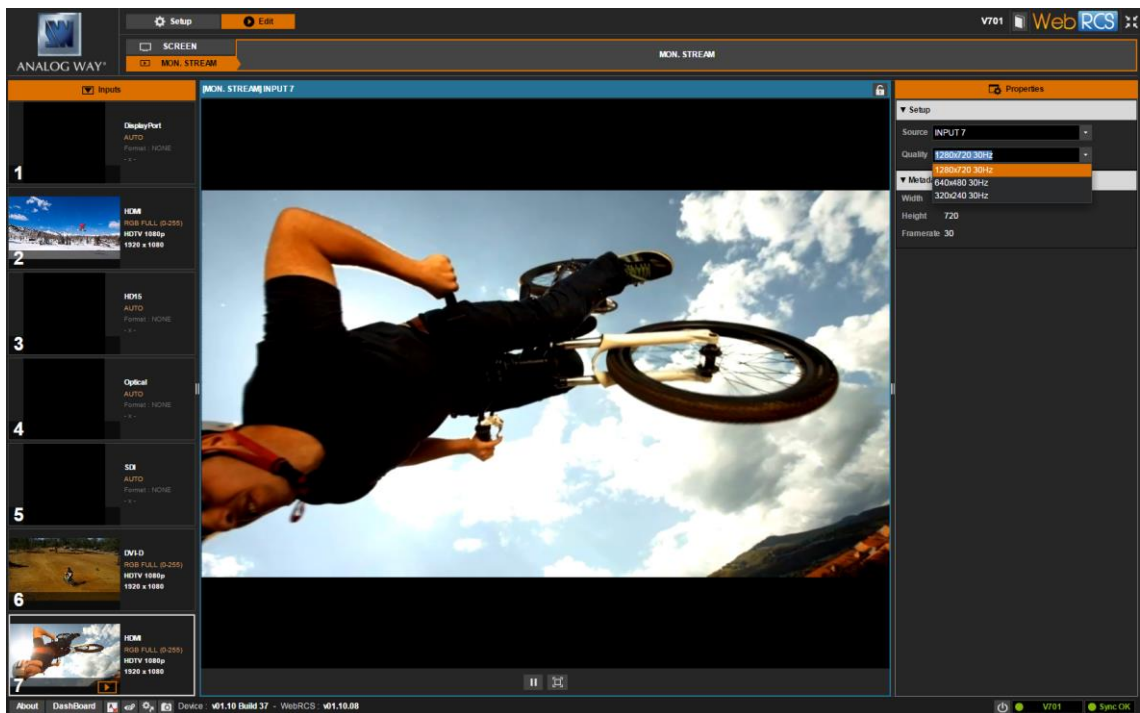
Products	VIO 4K
Date	May 18 th , 2016
Version	1.10.37
Web Remote Control Software (Web RCS)	1.10.08

The version (s) indicated here above has (have) been tested and validated by the Technical Support Department.

Technical Notes:

New features:

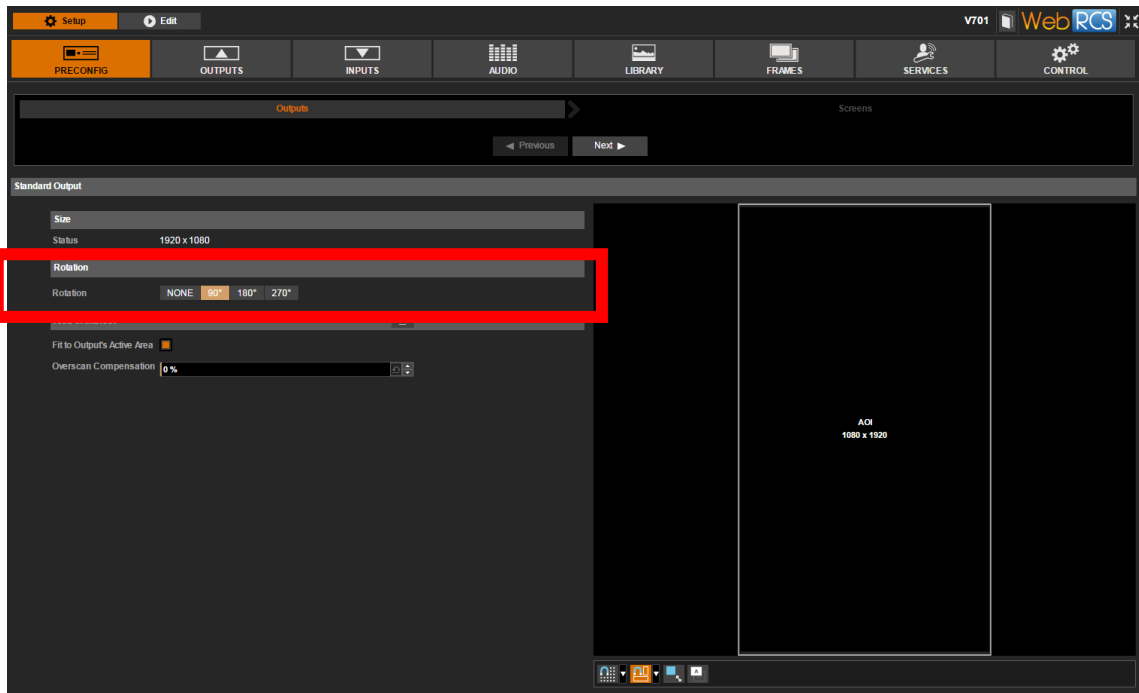
- Add Monitoring functionality for Inputs and Outputs to the Web RCS.** In the “Edit” tab, select “MON. STREAM” section. Then select a source to monitor: it can be either an input or an output. Finally select the monitoring quality: 320x240@30Hz, 640x480@30Hz or 1280x720@30Hz. Please note that only non-HDCP sources can be monitored.



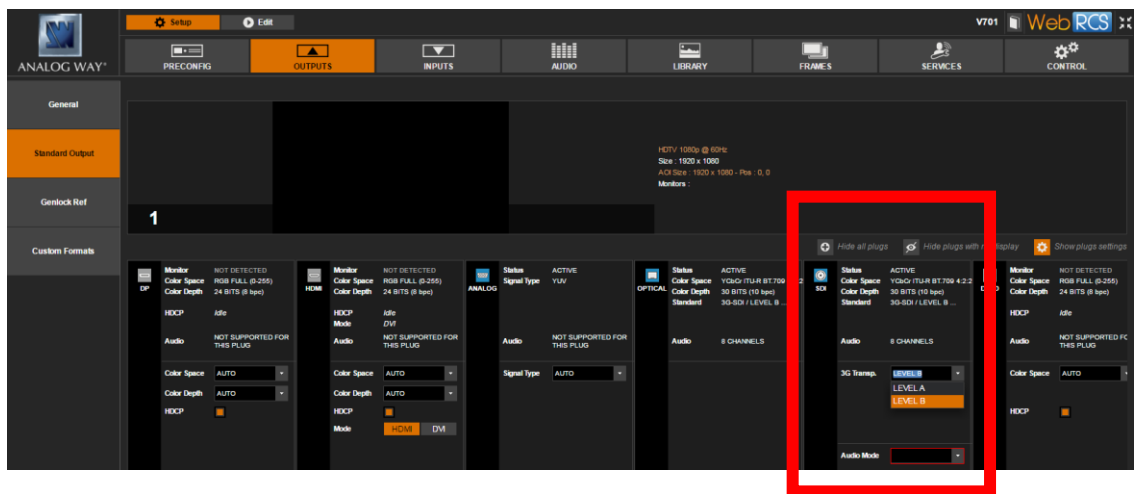
In the left panel containing the input status and snapshots, a small icon indicated that an input is currently being monitored.



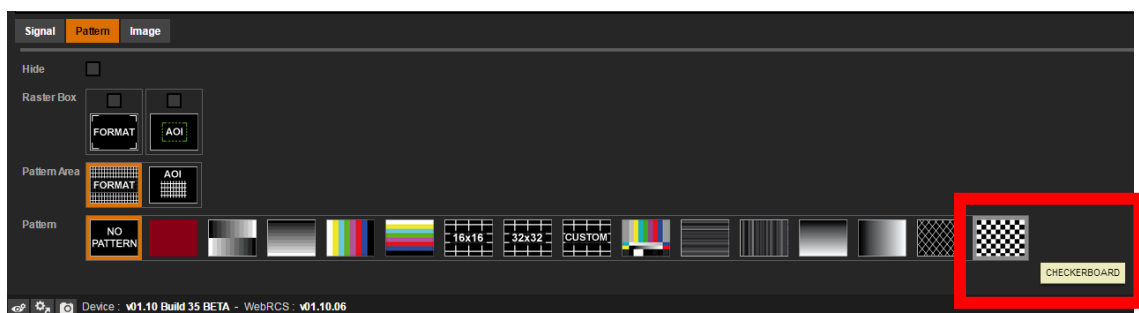
- **Rotation support for outputs and Frames.** In the “Setup” tab, the output content can be rotated by 90° steps.



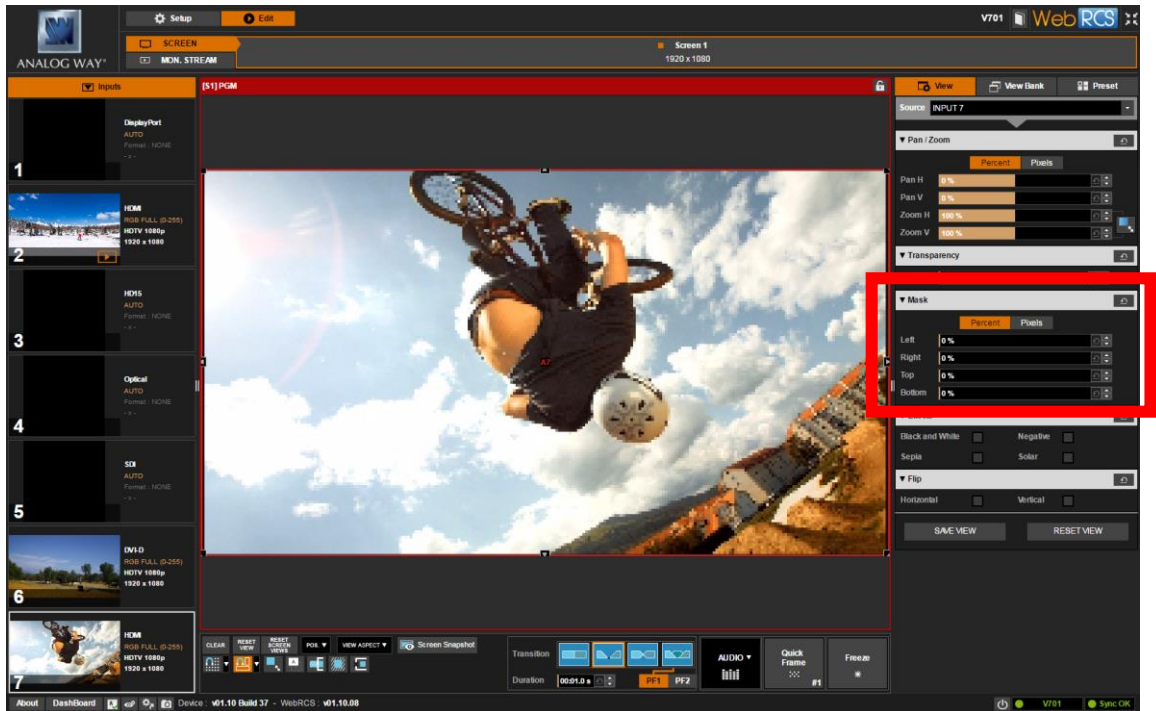
- **Implementation of 3G-SDI Level B for SDI and optical output plugs.** In the “Setup” tab, these settings can be found in the plug settings of the output



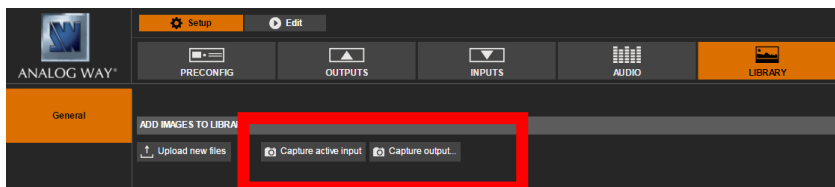
- **Add Checkerboard test pattern.** To use this new pattern, the “Pattern menu” of the selected output.



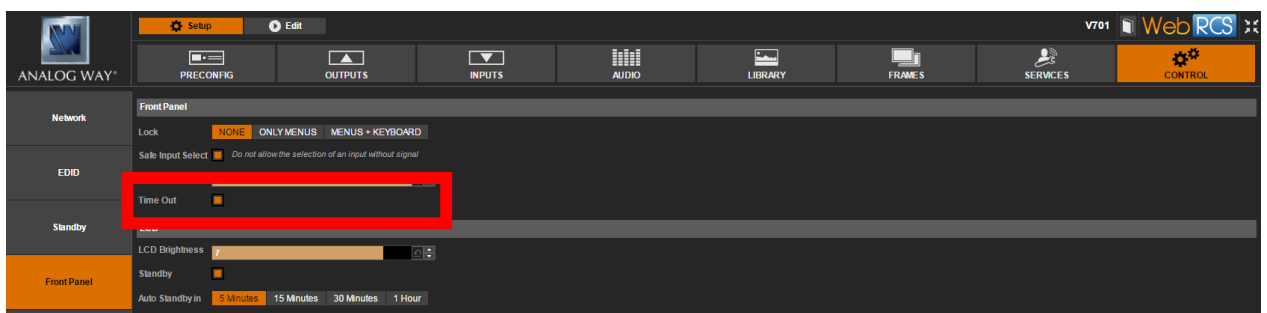
- **By default, the Low Latency mode of the deinterlacer is enabled.** By default, the deinterlacing process used for interlaced input signals doesn't add any extra frame delay. When disabling the low latency mode, the deinterlacer algorithm changes and improves the image quality but adds one extra-frame latency.
- **Add Mask parameters to "View" settings** to allow an individual crop for each outputs



- **Add the possibility to capture inputs and outputs**



- **Add a user menu to disable or not front panel menu timeout**



Bug fixes:

- In the WebRCS, some text entry boxes accept 32 characters instead of 31. The 32nd character is reserved for the end of string character.
- The status of 3G-SDI level B embedded audio remains invalid even if the audio was de-embedded properly.
- The overall latency is 2 frames instead of 1 when the reference is a SDI or optical input.
- For the Custom grid, when the thickness is set to 1 pixel, the horizontal inner lines had a thickness of 2 pixels
- Format with a pixel rate lower than 165Mhz and an active width greater than 2048 pixels are not displayed properly in the front panel monitoring and in the snapshots of the Web RCS
- In the CEA-861-F extension of HDMI EDID, the Vendor specific block is not extracted properly. Therefore, the capabilities of the output peripheral are not correctly handled.
- There is no audio on the SDI/OPTICAL output plugs when the output format is SDTV (PAL/NTSC)
- When the EDID change on the DisplayPort input, there is no notification to the source to indicate it (hot plug)
- The Monitoring may crash if the stream size is very small (1 or 2 lines only)
- When monitoring an input on the Web RCS, the cropping modifications may not be applied to the monitoring content (the input is displayed properly on the output).
- Even if the EDID of a display connected to the HD15 output plug is extracted properly, the EDID monitor detection remains false.
- The 480i format is not detected properly by the SDI or OPTICAL inputs.
- The Auto-detection of a Y/C analog source doesn't work.
- Cropping high resolution content too much may cause a failure of the monitoring feature
- Minor menu label corrections

Known issues:

- Web RCS Monitoring:
 - Changing the monitoring format after unplugging the current monitored input may cause an erroneous display once the input is plugged again.
 - The monitored content can't be centered when a crop is applied to a high resolution stream (more than 165Mpixels/s)
 - Depending on the monitoring format, a 480i signal may not be displayed properly.
- Input cropping modifications are not applied immediately when capturing an input. Once the unit has rebooted, the new input cropping is used during the capture

Missing features

- Import/export of the device configuration
- 6G-SDI support for inputs and outputs (SDI and Optical)

Products	VIO 4K
Date	March 21 st , 2016
Version	1.00.32
Web Remote Control Software (Web RCS)	1.00.19

The version (s) indicated here above has (have) been tested and validated by the Technical Support Department.

Technical Notes:

New features:

- Add the audio support for 3G-SDI level B.
- The custom formats can be selected as the EDID preferred format on each input EDID.
- Add the “Projector 1200p” format both on outputs and inputs.
- When an unknown format is detected, the format name is set to the detected active size instead of "UNKNOWN".
- New strategy for Temperature/Cooling management.
- In the Web RCS, add an individual reset for each input EDID.

Bug fixes:

- When the “motion” feature is enabled for the Grid 16x16 test pattern, the first line and the first column regularly flash.
- When frame-locking or genlocking from an interlaced signal, the output signal is not always synchronized with the same field.
- When frame-locking from a SDI or optical interlaced signal, the output content is not displayed properly on the DVI and DisplayPort content.
- Formats with an active line length greater than 2048 pixels and a pixel frequency lower than 165Mpixels/s are not functional on outputs plugs (exception of DisplayPort)
- In the Web RCS, TIFF and ICO picture formats should not be supported.
- When several picture files are uploaded from WebRCS and an invalid file is encountered, the following valid pictures are not imported.
- In Genlock mode, changing reference format can lock the output format configuration.
- Analog computer Black and White signals are not detected properly on the HD15 input#3 when selecting the “Computer B&W” input signal type (only RGSB is working causing wrong color display).
- The DisplayPort EDID extension data are corrupted, so the device doesn’t output any audio in auto mode (because the audio capabilities are stored in the EDID extension).
- By default, no audio is delivered from SDI/OPTICAL outputs: the operator has to force the 8 channel mode.
- It is not possible to pre-load a 4096x2160 (whatever the rate is) format in order to create a custom format.
- The NTSC format active size has been corrected (set to 486 lines instead of 487 previously)
- On the DVI-D input #5, the content is shifted to the right when the format pixel frequency is greater than 165 MPixels/s in HDMI mode (not in Dual Link DVI-D mode)
- A bad pixel column is displayed in the middle of input contents whose line width is odd (1365x1024 for example).

- 2560x1080 and 1680x720 Formats are detected as unknown formats.
- SDTV formats (480i, 576i) are not functional on the DisplayPort output plug.

Known issues:

- The Comma character can't be included in the pathname of a frame file.
- The HDCP link doesn't work with Dual-Link DVI-D outputs.
- In the Web RCS, some labels should accept only 31 characters instead of 32, to handle the "end of string" character.
- For the 3G-SDI level B input signal, the audio is properly extracted but the status is indicated as invalid.
- In the custom grid test pattern, the horizontal lines have a thickness of 2 pixels when the setting is set to 1 pixel.
- The device name label may be lost after a reboot.
- In the Web RCS, when enabling the "keep aspect ratio" mode, setting the Zoom H/V to zero causes abnormal behavior.
- When the SDI or Optical inputs are used as reference for the output rate, the latency can reach up to 2 frames instead of 1.

Missing features

- Output rotations
- Import/export of the device configuration
- Web RCS Monitoring of non-HDCP contents (inputs and outputs)
- 6G-SDI support for inputs and outputs (SDI and Optical)
- 3G-SDI level B support for outputs (SDI and Optical)

Products	VIO 4K
Date	February 5 th , 2016
Version	1.00.25
Web Remote Control Software (Web RCS)	1.00.15

The version (s) indicated here above has (have) been tested and validated by the Technical Support Department.

.....

Technical Notes:

Initial version